



PLANT PROPAGATION

Presented by

Lake Granbury Master Gardeners

Oct. 15, 2025





Propagation

Definition: Process of multiplying new plants from existing ones through either

Sexual (seeds)

- Pollination of a female flower by pollen from a male anther – leading to fertilization and formation of a seed.

Asexual (vegetative) reproduction

- Uses a part of a single parent plant, a stem, root or leaf, to create a new plant that is a genetic clone of the parent.

WHY PROPAGATE?



Propagation from seed

Advantages

- Easy to collect your own or buy

Disadvantages

- Longer to get plant to maturity
- May have to treat the seed to get it to germinate - Water, scarification, stratification, etc.
- Need to know conditions required for germination: water, light, oxygen and temperature

Seed Storage

Unless completely dried, needs to be in paper envelope. Once dried, can put paper envelope in air tight container - add silica gel packets.

Refrigerate seeds or bulbs if they need cold stratification to germinate.

- [LGMG/Hood County Library Seed Library](#)



Asexual Propagation

- Cuttings - stem, leaf, leaf-bud, root
- Layering - simple - sometimes called tip; compound; air; mound
- Division - rhizomes, bulbs, tubers

We won't address these, but other types include:

- Grafting
- Budding
- Tissue culture



Tools / Materials needed

Clean scissors, knife or pruners

Disposable gloves

Chlorox wipes

Pot, label and marker

Soil or Rooting Mixture – Sterile and well-drained: may include
lava sand/pumice, coarse perlite /vermiculite, peat moss

Rooting hormone

Gallon baggie or
soda bottle

Water





Cuttings

❑ Cuttings - Water or Soil?

- Stem –

4-6" cutting; slant cut below a node, remove lower leaves, cut off terminal bud on top, scrape bottom of stem and cut slightly into bottom of stem to expose the cambium layer

- Belinda's Dream rose video

<https://www.youtube.com/watch?v=PQmcQuGx79g> and handout

- Fig tree example – *Pamela Colborg* and reference to AgriLife handout
- Sedums

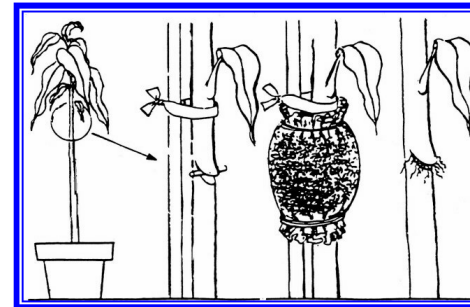
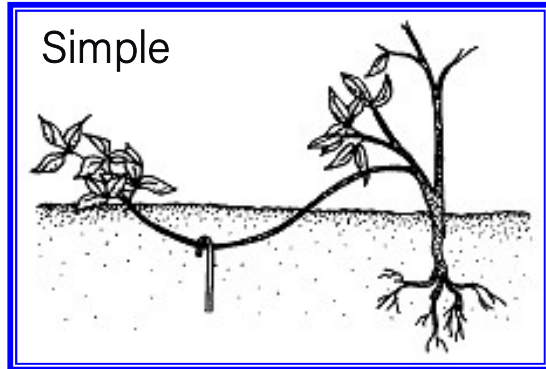
- Leaf or Leaf-Bud

- Root – e.g. Comfrey, Turks Cap –
Sherill Czarnecki

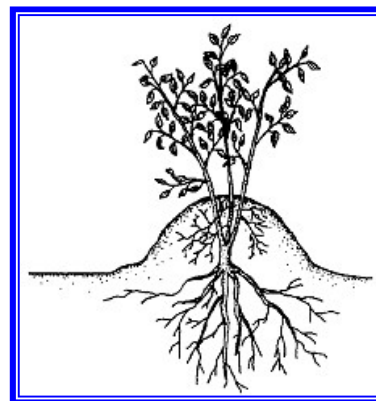
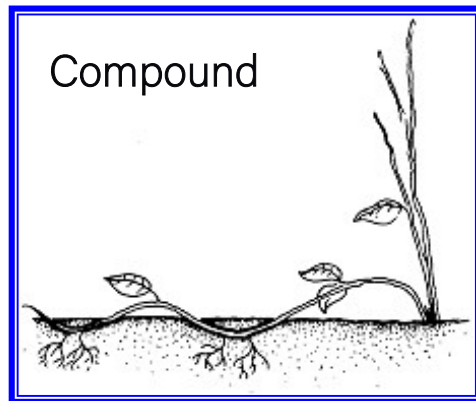




Layering



Air Layering



Mounding

Division

□ Division - includes both roots and shoots

- Plant division- separate clumps and repot
 - Blue Mist, Mexican Petunias, Obedient Plant, Liriope, grasses
 - Day lilies – *Nancy Walsh*
- Rhizomes – iris, ginger and rhubarb
- Bulbs – Garlic, chives, onion
- Tubers – Dahlia, caladiums, potatoes, ornamental sweet potatoes
- Corms – crocus, freesias
- Stolons – strawberries, spider plants, St. Augustine grass





Conditions to thrive

Media – components that provide optimum aeration, drainage and moisture holding characteristics

Moisture – thoroughly moisten before use

Light – diffused sunlight

Humidity – maintain high humidity yet adequately ventilated (soda bottle, plastic covering, mason jar)

Temperature – ideal root zone temps – 70-75 degrees

Rooting Hormones – Dip basal end into the chemical (which has been put into temporary container), then create a hole using a pencil or other object then put the cutting into the propagation medium.

Pests – Dawn & water? Ladybugs?





LGMG Plant Sale

Tori Schaneman, Plant Sale Chair

Plant sale

Types and Quantities

- Propagate at home
- Propagate at the Demo Garden on Monday/Thursday mornings
- Protect your plants at home over the winter

Cold-frame

Row crop cover

Greenhouse



Technical Resources

LGMG Plant Growing Guide for No. Texas -

<https://drive.google.com/file/d/19Ey1qf8AUo7ICSPYtNAJXM1Tq8sKOEL4/view>

<https://aggie-horticulture.tamu.edu/earthkind/landscape/plant-propagation/>

<https://aggie-horticulture.tamu.edu/earthkind/landscape/starting-seedlings-at-home/>

<https://aggie-horticulture.tamu.edu/earthkind/landscape/air-layering/>

<https://aggie-horticulture.tamu.edu/ornamental/a-reference-guide-to-plant-care-handling-and-merchandising/propagating-foliage-flowering-plants/>

<https://aggie-horticulture.tamu.edu/fruit-nut/2012/12/13/fig-propagation/>

Rose propagation video with our own Sherrill Czarnecki <https://www.youtube.com/watch?v=PQmcQuGx79g>

Dividing and **planting bearded iris** - <https://www.youtube.com/watch?v=bBzSHT9Sc44&t=235s>





Contact info

2025 Officers

President Olivia Barden

1st Vice President Dale Childers

Recording Secretary Debra Cook

Treasurer Tara Jones

2nd Vice President Genie Bishop

Corresp. Secretary Drew Ingram

Past President Steven Rhodes

2025 Committee Chairs

Demonstration Garden

Renée Rogers

Plant Sale

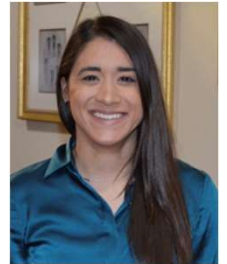
Tori Schaneman

Romancing the Monarch

Deborah Rollins

PR /Communications

Lou Hooper



**Hood County
Extension
Agent
Amanda
Salinas
817-579-3280**

www.txmg.org/hcmg

lakegranburymastergardeners@gmail.com

[Facebook.com/LakeGranburyMasterGardeners](https://www.facebook.com/LakeGranburyMasterGardeners)

[Instagram.com/lakegranburymastergardeners](https://www.instagram.com/lakegranburymastergardeners)

Lake Granbury Master Gardeners is a 501(c)3 organization

